
A vertical decorative bar on the left side of the slide, composed of several colored segments: blue, brown, orange, red, green, and light blue.A large, stylized orange arrow pointing to the right, positioned to the left of the main title.

# HIGHER EDUCATION:

## Working Today for Tomorrow's Workforce

Chancellor Allison D. Garrett  
Oklahoma Association of Collegiate  
Registrars and Admissions  
November 10, 2022



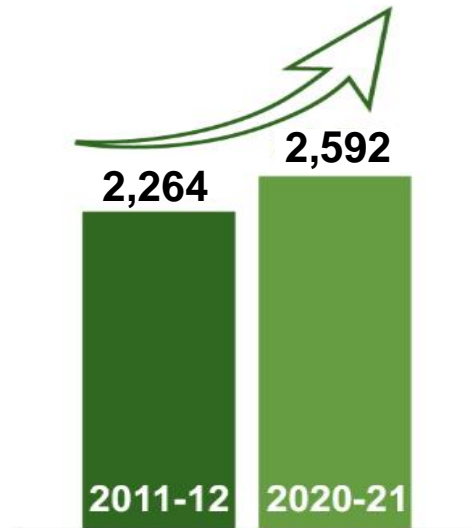
# GRADUATION NUMBERS



**RESEARCH  
TIER**

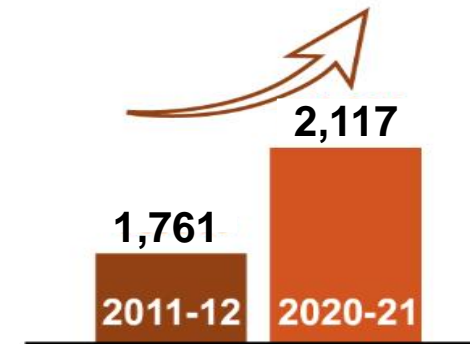
*six-year graduation rates*

Over the last 10 years, the number of graduates increased in all institutional tiers.



**REGIONAL  
UNIVERSITY TIER**

*six-year graduation rates*



**COMMUNITY  
COLLEGE TIER**

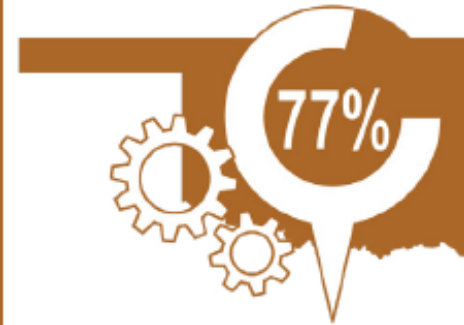
*three-year graduation rates*



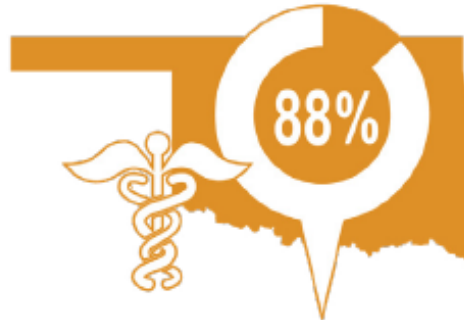
# Employment Outcomes for Critical Occupations



More than 89% of teacher education graduates are employed in the state one year after graduation.



77% of engineering graduates with a bachelor's degree are employed in the state one year after graduation.



Nearly 88% of registered nurse graduates remain in the state one year after graduation and 84% five years after graduation.

# GRADUATES EMPLOYED IN OKLAHOMA AFTER GRADUATION

	Oklahoma Residents	Non-Residents who attend Oklahoma Institutions	Total Employment Rate
<b>1-Year after Graduation</b>	<b>89.7%</b>	<b>65.6%</b>	<b>83.7%</b>
<b>5-Years after Graduation</b>	<b>87.5%</b>	<b>61.5%</b>	<b>81.3%</b>

## **METHODOLOGY:**

Data match between OSRHE, OESC, and OTC records to determine percent of state system graduates who remain in the state and are employed in the state 1-Year and 5-Years after graduation.

## GRADUATES EMPLOYED IN OKLAHOMA – STEM FIELDS

	Oklahoma Residents	Non-Residents who attend Oklahoma Institutions	Total Employment Rate
<b>1-Year after Graduation</b>	<b>88%</b>	<b>63.9%</b>	<b>79.8%</b>
<b>5-Years after Graduation</b>	<b>85.4%</b>	<b>59.7%</b>	<b>77.0%</b>

### **METHODOLOGY:**

Data match between OSRHE, OESC, and OTC records to determine percent of state system graduates who remain in the state and are employed in the state 1-Year and 5-Years after graduation.



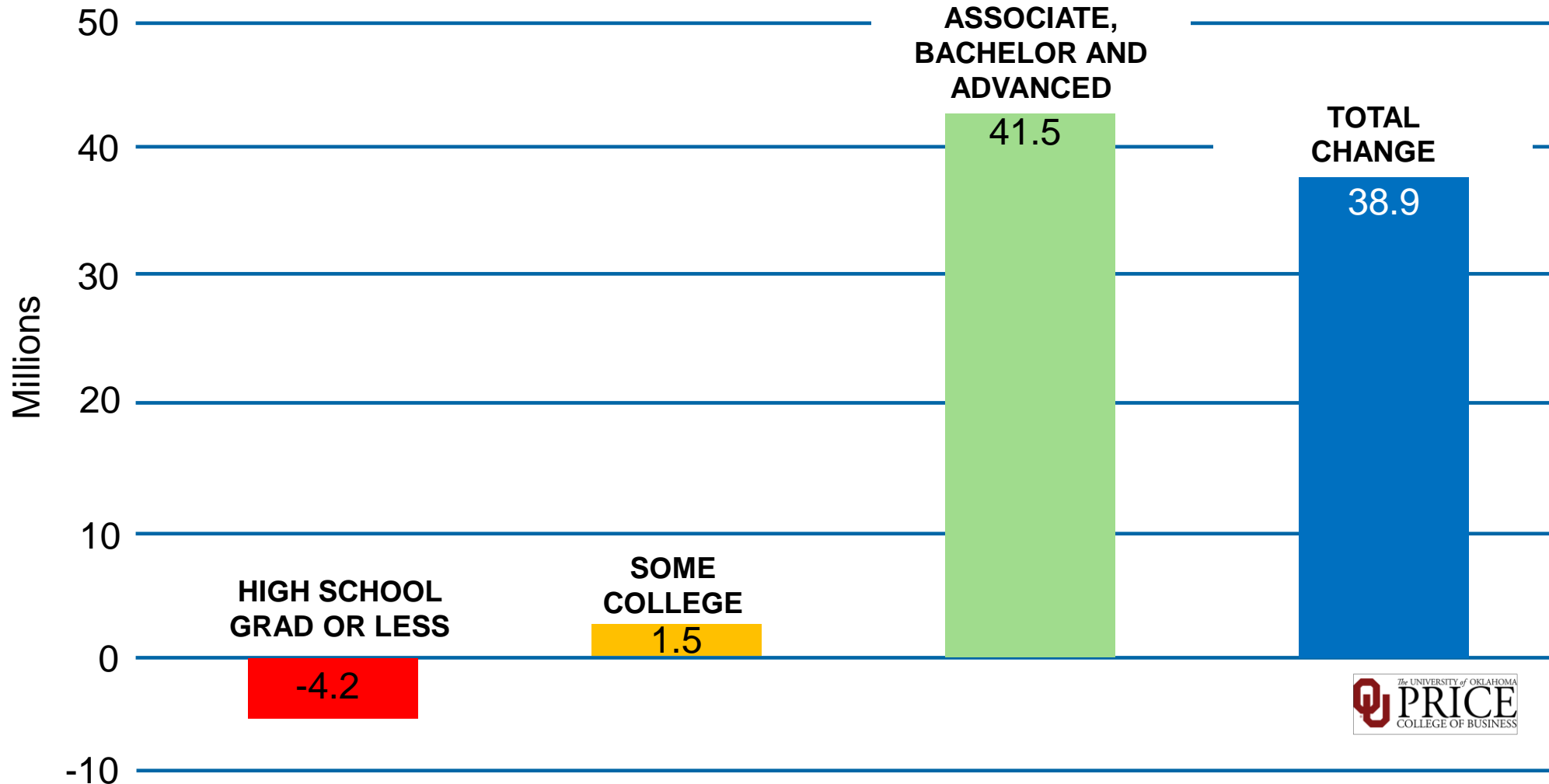
# Oklahoma's 100 Critical Occupations

## According to Oklahoma Works:

- ▶ **54 of the top 100** critical occupations in 2030 will require an associate's degree or higher
- ▶ **Oklahoma's top 29** highest paying critical occupations in 2030 will require an associate's degree or higher
- ▶ **8 of Oklahoma's top 10** fastest growing critical occupations in 2030 will require an associate's degree or higher



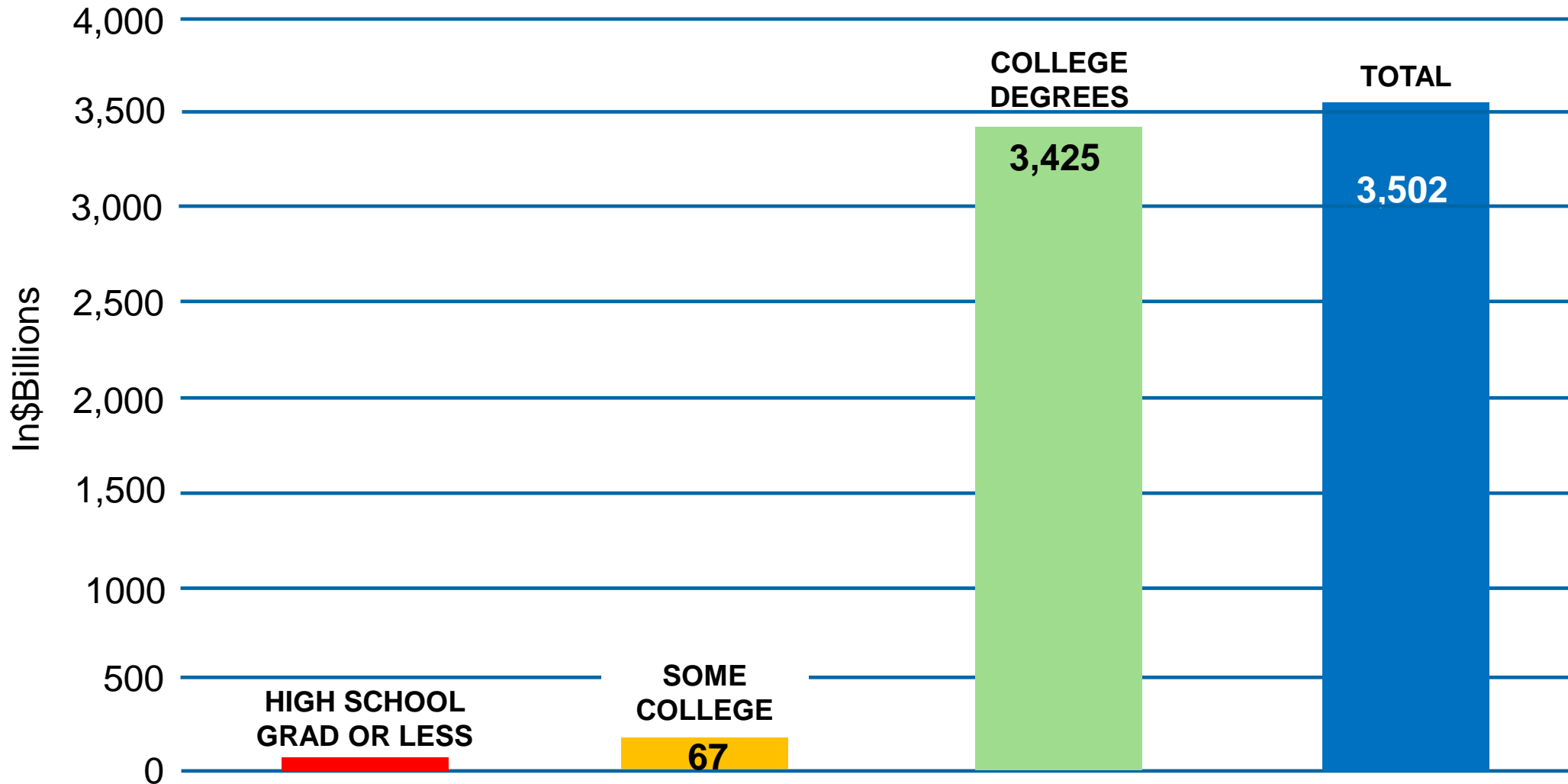
# U.S. EMPLOYMENT CHANGE BY MAJOR-GROUP EDUCATIONAL ATTAINMENT 25+ YEARS OF AGE, FROM 1992-2022



SOURCE: Robert C. Dauffenbach, Professor Emeritus, OU Price College of Business.



# REAL EARNINGS CHANGE BY MAJOR-GROUP EDUCATIONAL ATTAINMENT: 18+ YEARS OF AGE, FROM 1994-2020

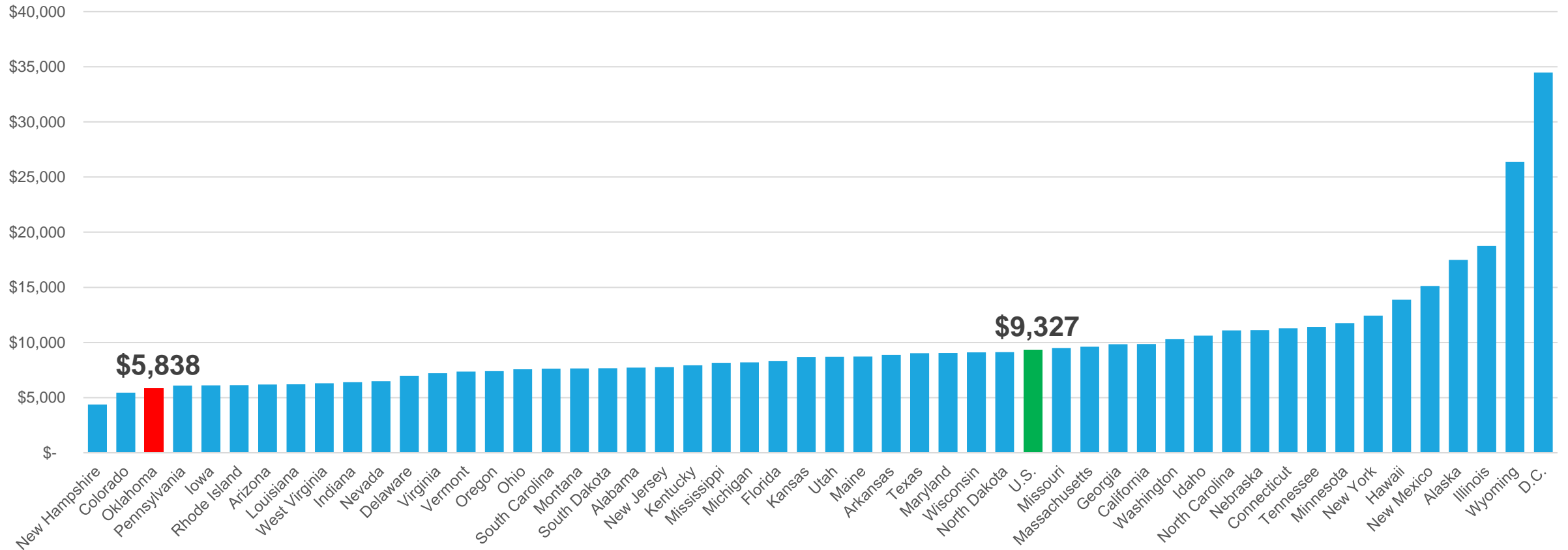


SOURCE: Robert C. Dauffenbach, Professor Emeritus, OU Price College of Business.





# PUBLIC HIGHER EDUCATION APPROPRIATIONS PER FTE BY STATE, FY2021 (ADJUSTED)

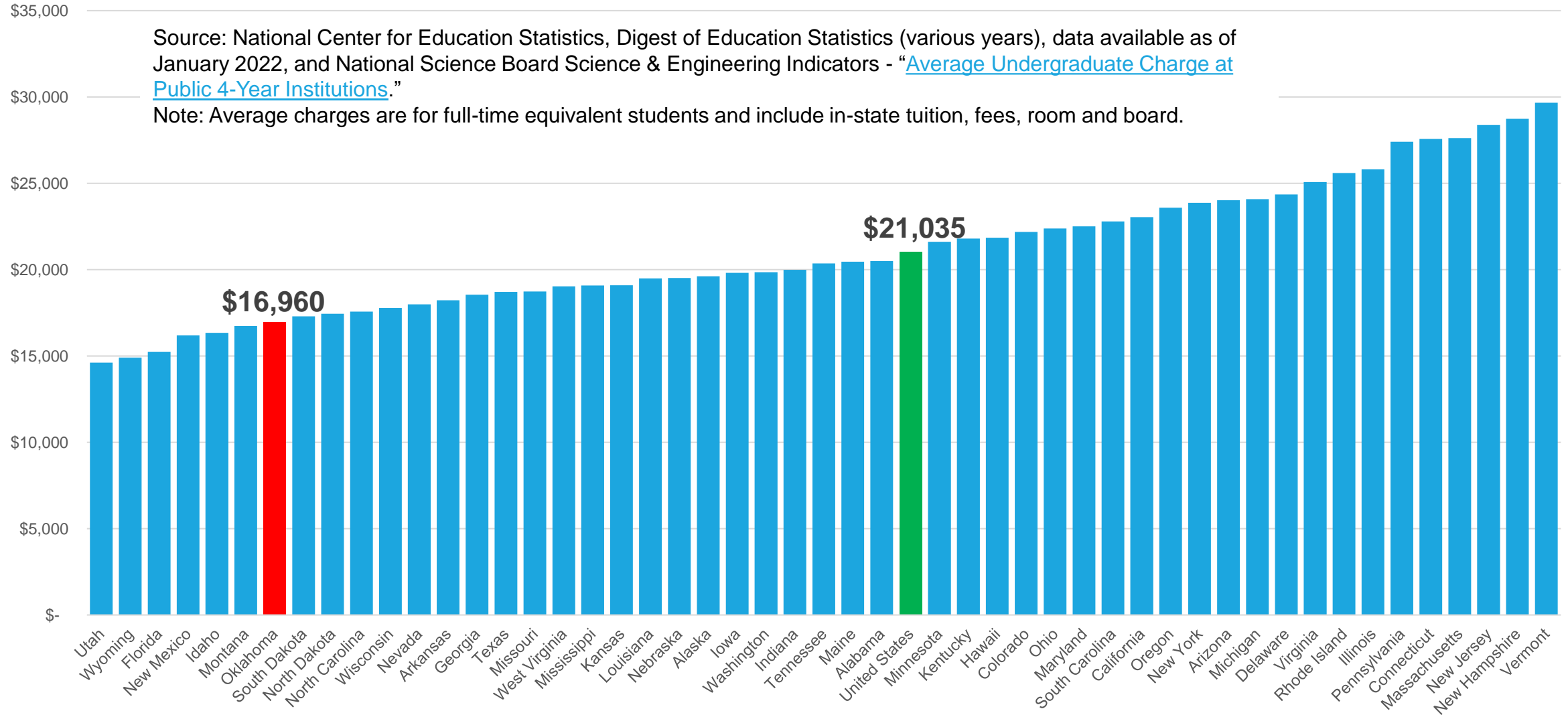


Source: State Higher Education Executive Officers Association State Higher Education Finance Report, FY2021.

Note: Education appropriations are a measure of state and local support available for public higher education operating expenses and student financial aid, excluding appropriations for research, hospitals, and medical education. Education appropriations include federal stimulus funding.

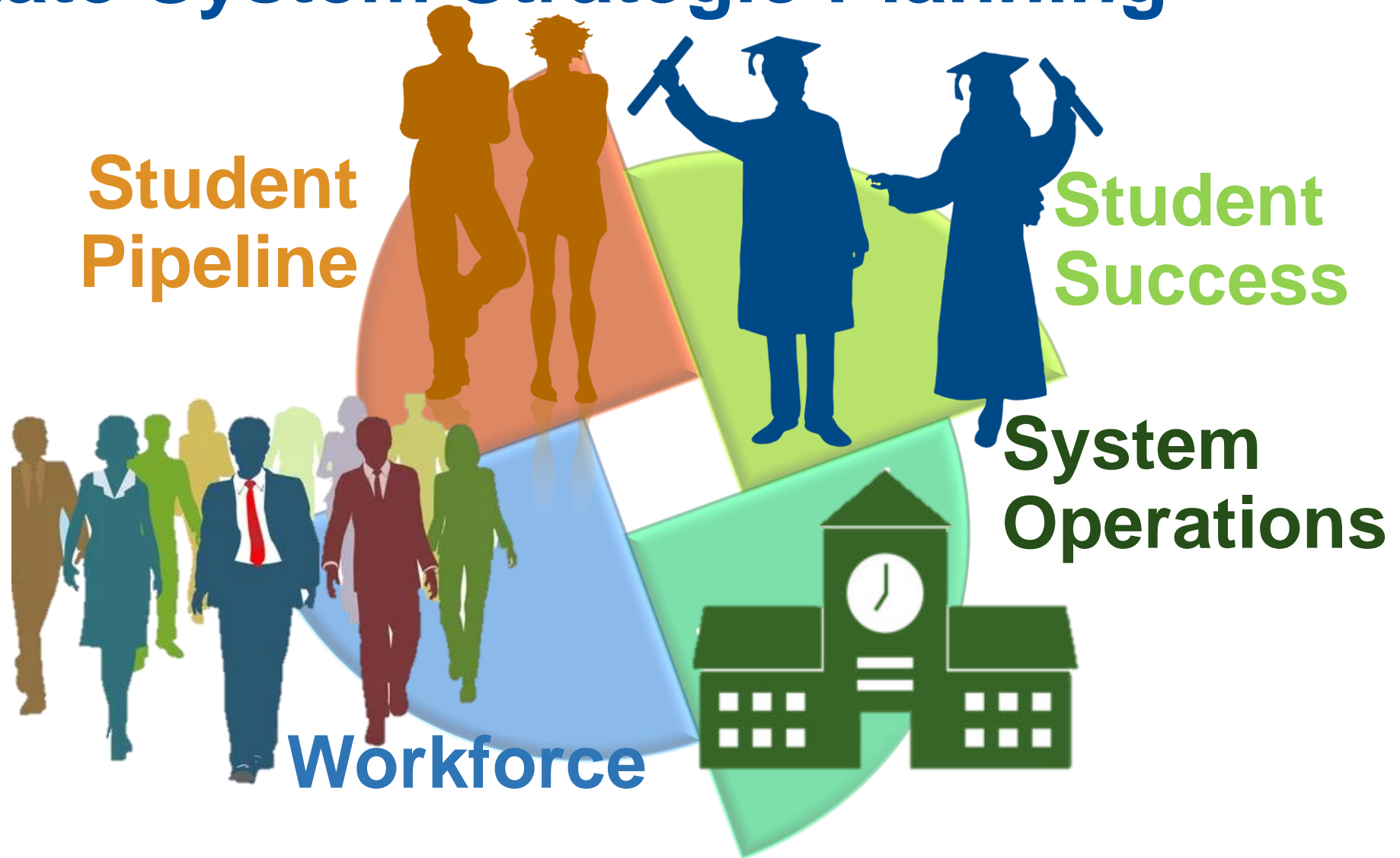
# SEVENTH LOWEST COST OF ATTENDANCE

## AVERAGE ANNUAL UNDERGRADUATE CHARGE AT PUBLIC 4-YEAR INSTITUTIONS - 2020





# State System Strategic Planning





# STUDENT PIPELINE

- ▶ Concurrent enrollment
- ▶ Enrollment trends
- ▶ Changing student demographics
- ▶ Recruitment and marketing challenges
- ▶ Student preparedness
- ▶ Transfer patterns and articulation
- ▶ Adult learners and Oklahoma's "some college, no degree" population
- ▶ Upskilling and short-term micro-credentials





# STUDENT SUCCESS

- ▶ Defining student success
- ▶ Challenges to student retention
- ▶ Identifying predictors of student success
- ▶ Review of current system-wide strategies for student success
- ▶ Strengthening K-12 partnerships to address remediation challenges
- ▶ National best practices for student success
- ▶ Early alert warning systems





# SYSTEM OPERATIONS

- ▶ Institutional collaborations and partnerships
- ▶ Shared services
- ▶ Academic program delivery
- ▶ Performance-based funding



# WORKFORCE



- Attracting out-of-state students to Oklahoma
- Employment outcomes of Oklahoma's graduates
- Increasing trends in alignment of job openings with skills over credentials
- Seamless opportunities for upskilling at any point in a career path
- Internship and work-based learning opportunities
- Engagement with the business community
- Meeting business needs in real-time
- Micro-credentialing

# QUESTIONS?

E-mail: [agarrett@osrhe.edu](mailto:agarrett@osrhe.edu)